

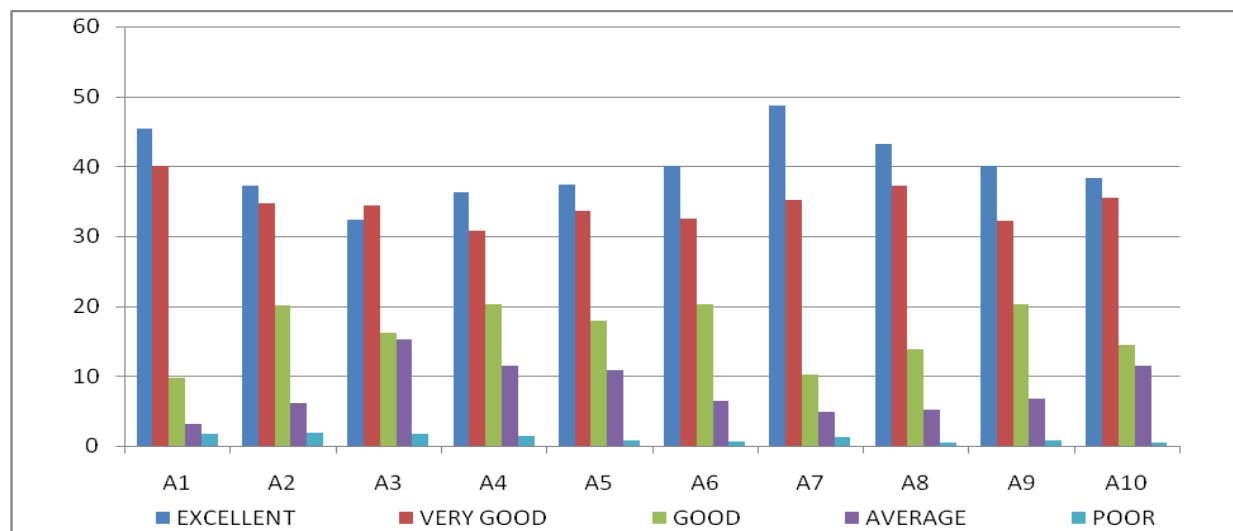
## **JAYA ENGINEERING COLLEGE**

### **FEEDBACK ANALYSIS**

**ACADEMIC YEAR 2019-2020**

#### **STUDENT'S FEEDBACK ON CURRICULUM**

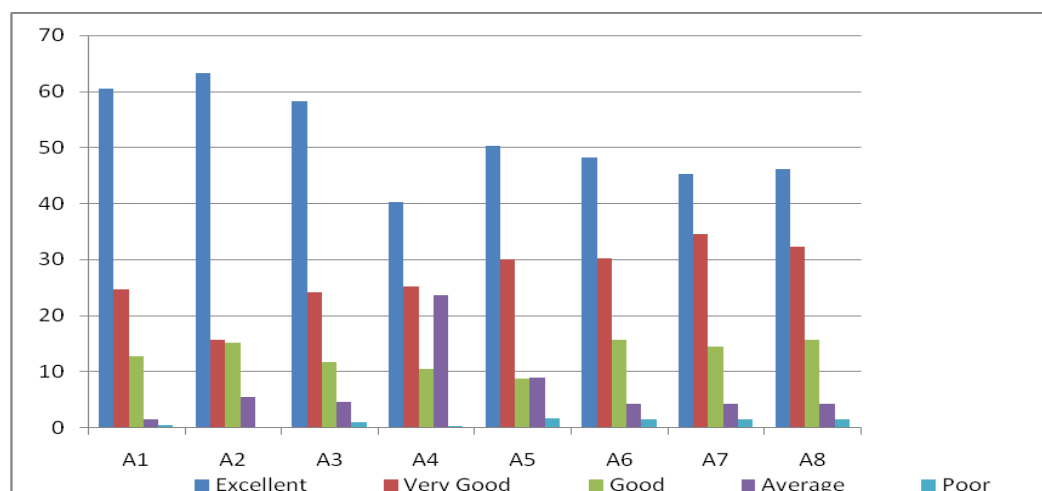
LEGEND	Questioner	Excellent	Very Good	Good	Average	Poor
A1	How do you rate the syllabus of the courses that you have studied in relation to the competencies expected out of the course?	45.32	40.12	9.75	3.12	1.78
A2	How do you rate the relevance of the units in Syllabus relevant to the course?	37.25	34.78	20.03	6.12	1.92
A3	How do you rate the allocation of the credits to the courses?	32.32	34.45	16.25	15.22	1.77
A4	How do you rate the offering of the electives in terms of their relevance to the specialization streams?	36.23	30.75	20.24	11.5	1.35
A5	How do you rate the electives offered in relation to the Technological advancements?	37.4	33.54	17.95	10.9	0.75
A6	Rate the Size of syllabus in terms of the load on the student	40.12	32.56	20.2	6.5	0.7
A7	Rate the courses in terms of extra learning or self learning considering the design of the courses	48.75	35.21	10.2	4.8	1.25
A8	How do you rate the evaluation scheme designed for each of the course?	43.25	37.25	13.75	5.25	0.5
A9	How do you rate the objectives stated for each of the course?	40	32.25	20.25	6.7	0.8
A10	How do you rate the percentage of courses having LAB components?	38.25	35.42	14.5	11.5	0.4



**IQAC Analysis of Student's Feedback reveals that 91.23% of students has given excellent rating to the syllabus framed by the Anna university.**

### TEACHER FEEDBACK ON CURRICULUM

Legend	Curriculum, Teaching, Learning and Evaluation:	Excellent	Very Good	Good	Average	Poor
A1	Syllabus is suitable to the course.	60.5	24.75	12.75	1.5	0.5
A2	Syllabus is need based.	63.25	15.75	15.25	5.5	0.25
A3	Aims and objectives of the syllabi are well defined and clear to teachers and students.	58.25	24.25	11.75	4.75	1
A4	Course content is followed by corresponding reference books/materials	40.25	25.2	10.5	23.65	0.4
A5	The course/syllabus has good balance between theory and Lab.	50.25	30.15	8.75	9.05	1.8
A6	The course/syllabus of this subject increased my knowledge and perspective in the subject area.	48.25	30.25	15.75	4.25	1.5
A7	The course/program of studies carries sufficient number of optional papers.	45.25	34.5	14.45	4.3	1.5
A8	The books prescribed/listed as reference materials are relevant, updated and appropriate.	46.15	32.25	15.75	4.25	1.6

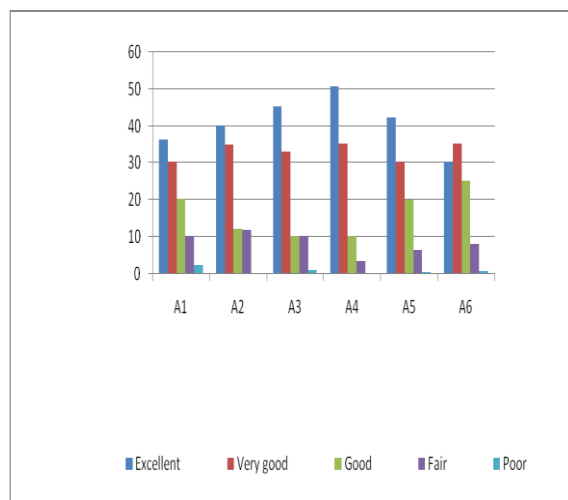


**IQAC Analysis of Teacher's Feedback reveals that 95.23% of teaching faculty members has given excellent rating to the syllabus framed by the Anna university.**

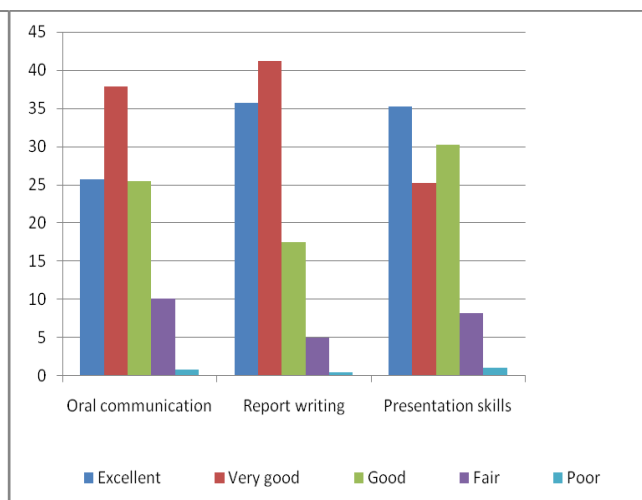
## **Feedback – Alumni**

<b>I - Knowledge</b>	Excellent	Very good	Good	Fair	Poor
Maths, Science, Humanities and professional discipline , (if applicable)	36.25	30.45	20.35	10.45	2.5
Problem formulation and solving skills	40.25	35.12	12.25	12.05	0.33
Collecting and analyzing appropriate data	45.25	33.21	10.24	10.2	1.1
Ability to link theory to practice.	50.75	35.25	10.25	3.5	0.25
Ability to design a system component or process	42.3	30.5	20.1	6.65	0.45
IT knowledge	30.45	35.25	25.3	8.25	0.75
<b>II Communications Skills</b>					
Oral communication	25.7	37.85	25.45	10.15	0.85
Report writing	35.75	41.25	17.5	5.05	0.45
Presentation skills	35.25	25.21	30.24	8.25	1.05
<b>III Interpersonal Skills</b>					
Ability to work in teams	54.25	20.25	18.23	6.27	1
Ability to work in arduous /Challenging situation	37.58	24.52	19.25	17.25	1.4
Independent thinking	34.25	37.45	20.5	6.75	1.05
Appreciation of ethical Values	35.75	28.75	25.5	9.25	0.75
<b>IV Management /leadership Skills</b>					
Resource and Time management skills	35.25	32.75	20.55	10.25	1.2
Discipline	40.25	34.65	18.15	6.15	0.8

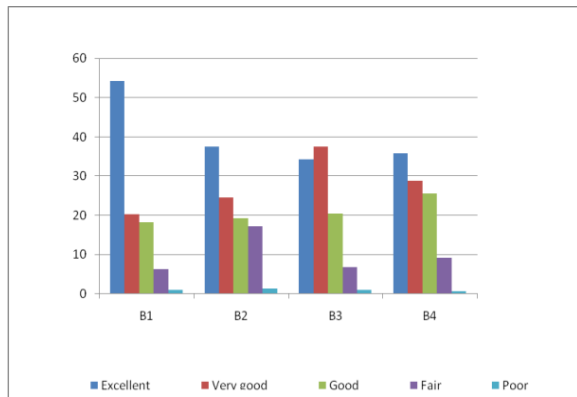
### **Knowledge**



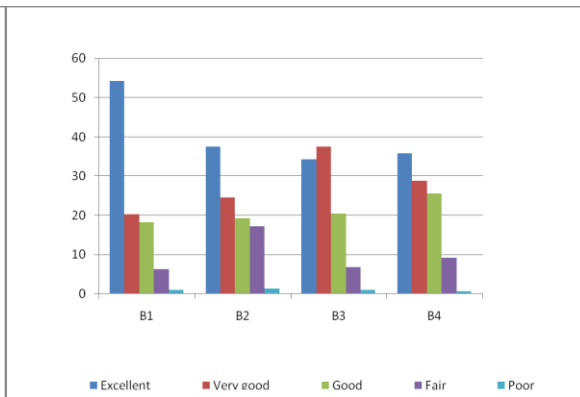
### **Communications Skills**



## Interpersonal Skills



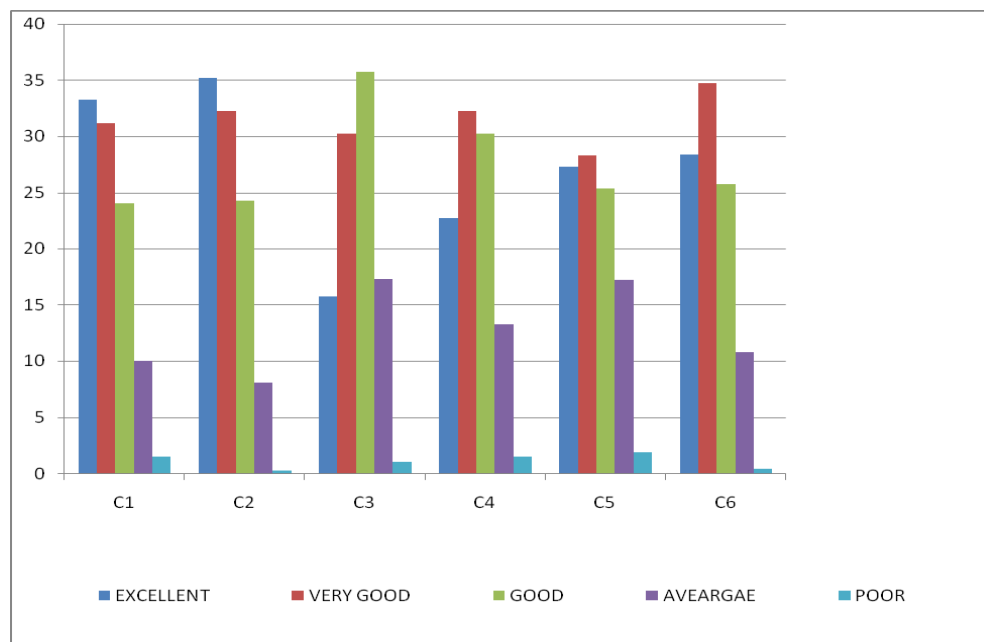
## Management /Leadership Skills



IQAC analysis on ALUMNI feedback shows that 90 % students' knowledge on the system design, report writing, independent thinking, and managerial skills have improved

## **Feedback Form – Parents**

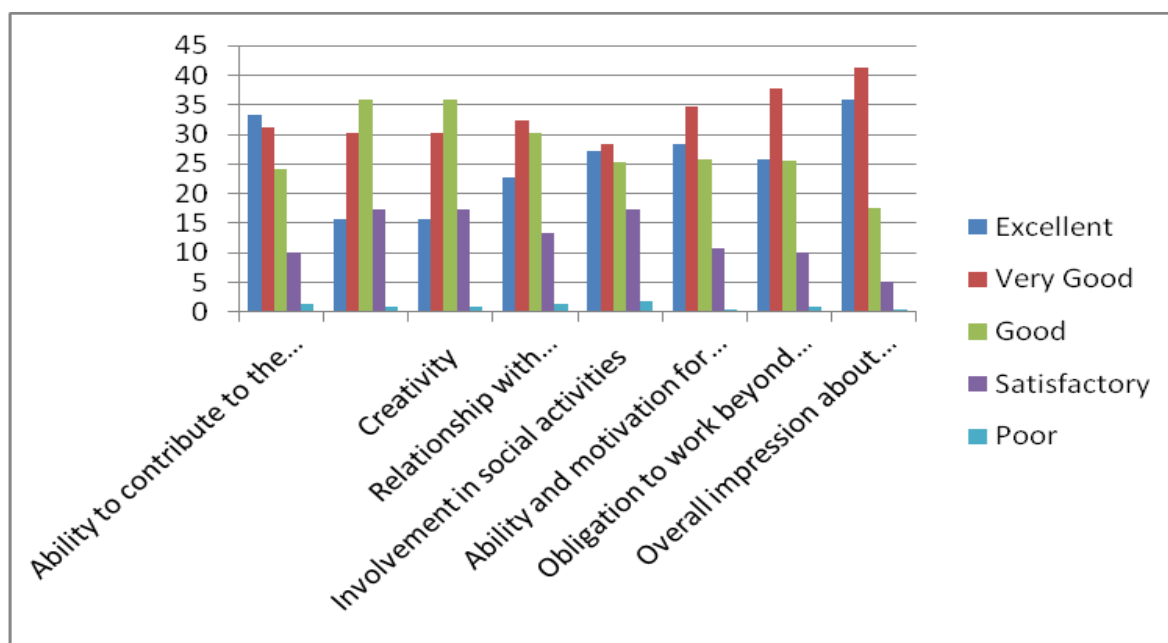
legend	Statements	Excellent	Very Good	Good	Average	Poor
C1	Holistic development of students is ensured by participation of students in various sports, cultural and co-curricular activities organized throughout the year.	33.25	31.18	24.05	10.02	1.5
C2	Students are sensitized towards cross cutting issues like gender equality, environment and sustainability, ethics and values etc,through relevant courses in the curriculum as well as through community service / projects with NGOs, participation in various awareness campaigns and blood donation drives, exhibitions on socially relevant issues etc.	35.21	32.25	24.25	8.05	0.24
C3	The academic flexibility embedded in the curriculum provides opportunities to students to pursue their interest by choosing from a vast number of pathways / electives from own area/specialization as well as from other areas.	15.75	30.25	35.75	17.25	1
C4	Courses in the curriculum promote Entrepreneurship and students are encouraged and supported to initiate startups	22.75	32.25	30.25	13.25	1.5
C5	The curriculum has been designed to make students industry ready by imparting analytical and reasoning, language and soft skills in addition to technical competencies, as desired by the industry.	27.25	28.33	25.35	17.24	1.83
C6	The curriculum is outcome based and the expected outcomes, through various courses, are attained	28.34	34.75	25.75	10.75	0.41



**IQAC analysis on parent's feedback shows that 75.25% of parent's agrees/satisfied with curriculum, project work skills, entreneurship skills developed to students.**

## **FEEDBACK FORM FOR EMPLOYERS**

S.No.	Description	Excellent	Very good	Good	Satisfactory	Poor
1	Ability to contribute to the goal of the organization	33.25	31.18	24.05	10.02	1.5
2	Technical knowledge/skill Ability to manage/leadership Innovativeness	15.75	30.25	35.75	17.25	1
3	Creativity	15.75	30.25	35.75	17.25	1
4	Relationship with seniors/peers/subordinates	22.75	32.25	30.25	13.25	1.5
5	Involvement in social activities	27.25	28.33	25.35	17.24	1.83
6	Ability and motivation for social activity	28.34	34.75	25.75	10.75	0.41
7	Obligation to work beyond schedule if required	25.7	37.85	25.45	10.15	0.85
8	Overall impression about their performance	35.75	41.25	17.5	5.05	0.45



**IQAC analysis on Employers' feedback shows that 85.25% of employers agrees/satisfied Technical Knowledge, creativity, social activities and overall impression with to students.**